

A1 Shoutbox User Manual

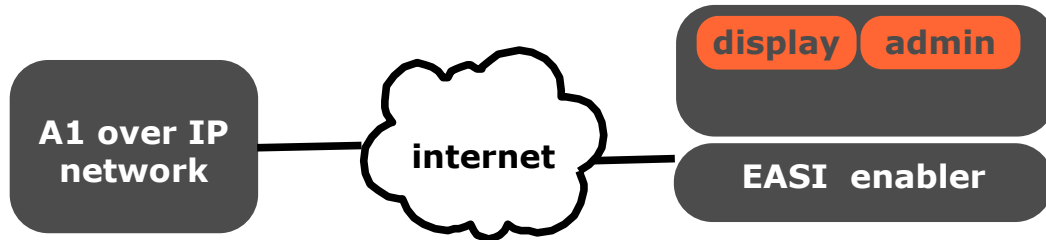
getting started

version 2
20080626

Overview

A1 Shoutbox is a SIP-based messaging application which can be used at events or whenever you would like to display incoming SMS or instant messages on a big screen without using a GSM modem. The only prerequisites are an internet connection and a A1 over IP Account.

To receive SMS or IM you need the EASI enabler (ships with the A1 Shoutbox). The EASI enabler connects your computer to A1 over IP.



The A1 Shoutbox application consists of two parts: admin and display.

A1 Shoutbox admin:

Using the administration application you can screen all incoming messages and filter some of them out, if necessary. You can also take advantage of some features like senders number hiding, color change, etc.

A1 Shoutbox display:

The display application can run either on the same or a different machine. Therefore it's possible to run the administration tool in a different room, where the display application can be executed on a notebook next to a video beamer. Display and administration application are connected via LAN (TCP/IP).

The display offers an extra text line, which can be configured during the installation process (infomessage). This line could say something like "please send your SMS to 0664 0664 12345678".

A1 Shoutbox is developed by Forschungszentrum Telekommunikation Wien (www.ftw.at) a long-time R&D partner of mobilkom austria.

Requirements

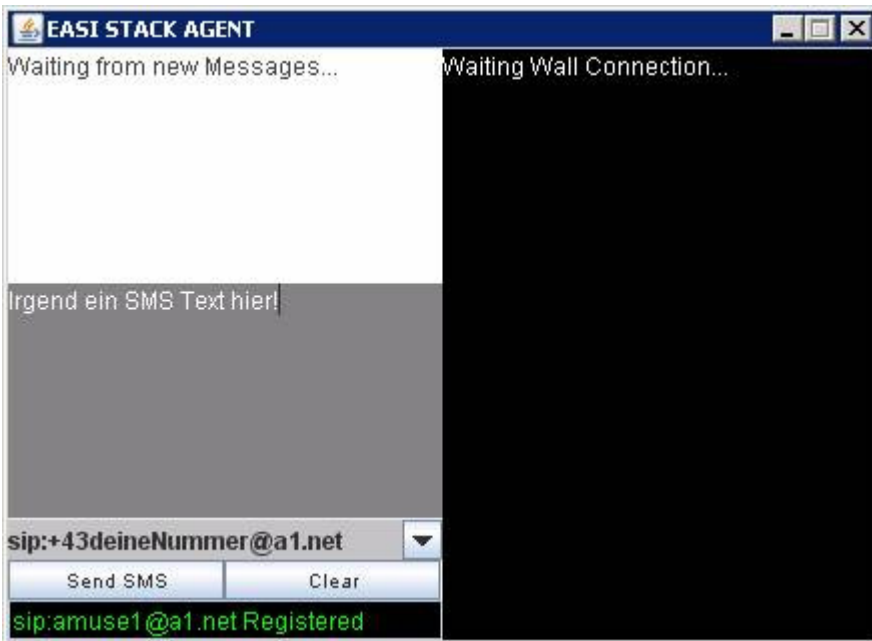
- Internet connection without any restrictions (port 5060 open, etc.)
- A1 over IP Account (see www.a1.net/a1overip)
- Java Runtime 1.6 or higher (<http://java.sun.com>)
- PC with Windows

Installation

Begin the installation with a double click on "A1 Shoutbox Installer.jar". Complete the installation by following the onscreen instructions.

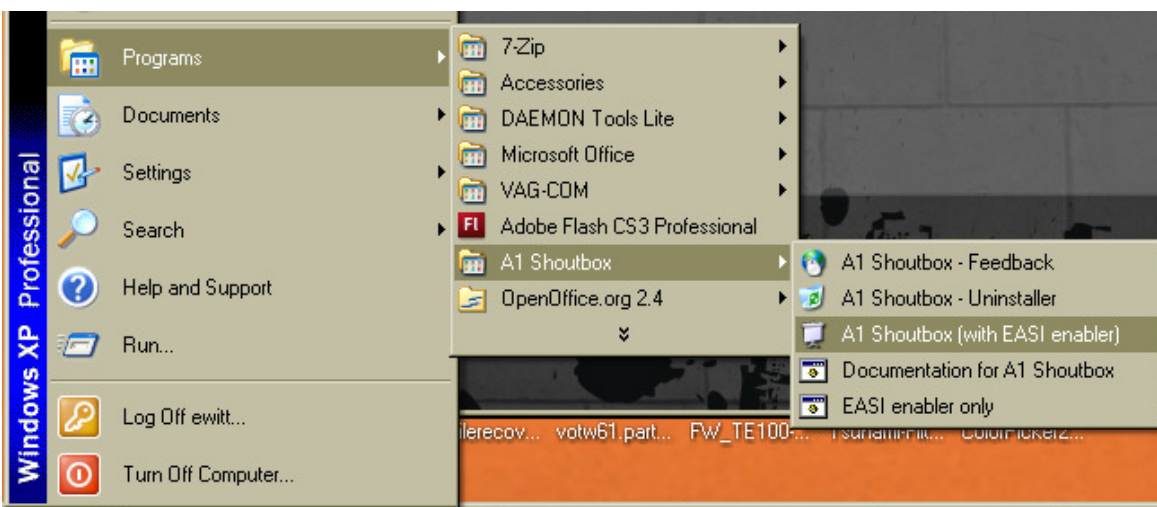
Please note:

Due to the beta stadium of this application it is necessary to trigger the communication by actively sending a message to a mobile phone number. After starting the application go to the EASI STACK AGENT window (see image below), type in a number in the following format: **sip:+43664331xxxx@a1.net** and press the "Send SMS" button. After that the A1 Shoutbox application is ready to receive messages.



First steps

- Start the Shoutbox environment with "A1 Shoutbox (with EASI Enabler)"



All necessary components will be opened, **preconfigured for single machine usage** (shoutbox admin and shoutbox display running on one machine).

- In order to receive messages and send any messages to the A1 Shoutbox you will first have to click the **connect button** of the shoutbox admin interface.



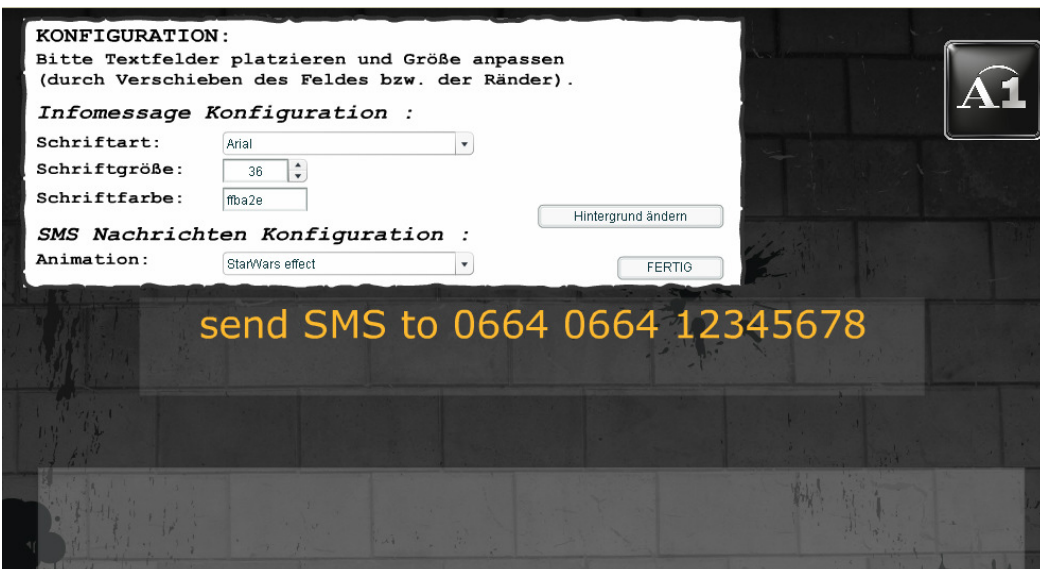
If everything is OK the **connection lamps turn green**.



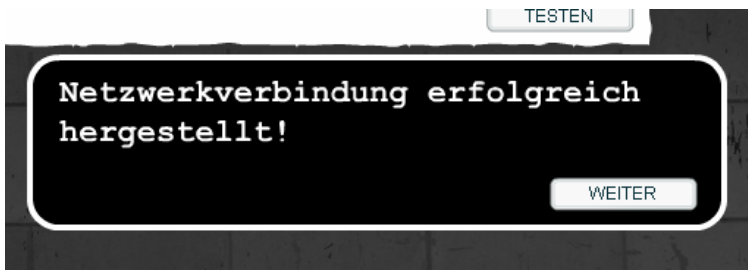
Otherwise check your connection settings by pressing on setup -> **connections**



- Now **switch to the A1 Shoutbox display application and step through the windows** providing the necessary configuration steps. (The network configuration is already preconfigured for single machine usage).



If a message window indicates that your network **connection has been established** the configuration is finished.



Now you are **ready to receive messages** and send messages to A1 Shoutbox.

- You can send a test message by clicking **insert msg** and entering your message in the pop-up window.



Overview of all options:

Connect: Connects the SMS Admin Interface with the A1 Shoutbox and the EASI Enabler.

Send msg: Sends the next message in the message queue.

Insert msg: Lets you directly insert a (admin) message without using SIP or a cell phone.

Auto process: Sends the messages in the queue automatically in given intervals. (See setting)

Auto random: Sends the messages in the queue automatically in given intervals, but with randomizing the message order.

Manually: Switch back to manual mode. Messages are not processed automatically any more. Messages can now be sent by the *Send msg* button.

Connections: Configuration of the connection settings for distributed use. (A1 Shoutbox, SMS Admin and EASI Enabler on different computers)



Settings:

If pressed a pop-up will be opened with following options:

A1 Shoutbox settings
admin settings:

Send Message Delay: FROM format options:

Hide last numbers of FROM:

Number of messages to take for auto random mode:

Switch to auto random mode if there are no new messages:

Use message filters: FROM color filter

Send Message Delay:

Interval between message sending in *auto process* or *auto random mode*.

FROM format options: changes the message sender information shown on the A1 Shoutbox output screen

from detailed to less detailed.

Hide last number of FROM: Hide the last n digits of the sending number on the A1 Shoutbox.

Number of messages to take for auto random mode:

Only take the last n messages from the queue for randomized sending. E.g.: If there are 6 messages in the queue and auto random is 3, than only messages 3 to 6 are sent in random order. All other messages will not be sent at all.

Use message filters: Enables/Disables different colors for different numbers and SIP names.